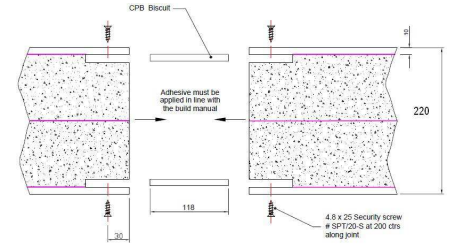


Mantle

Building System

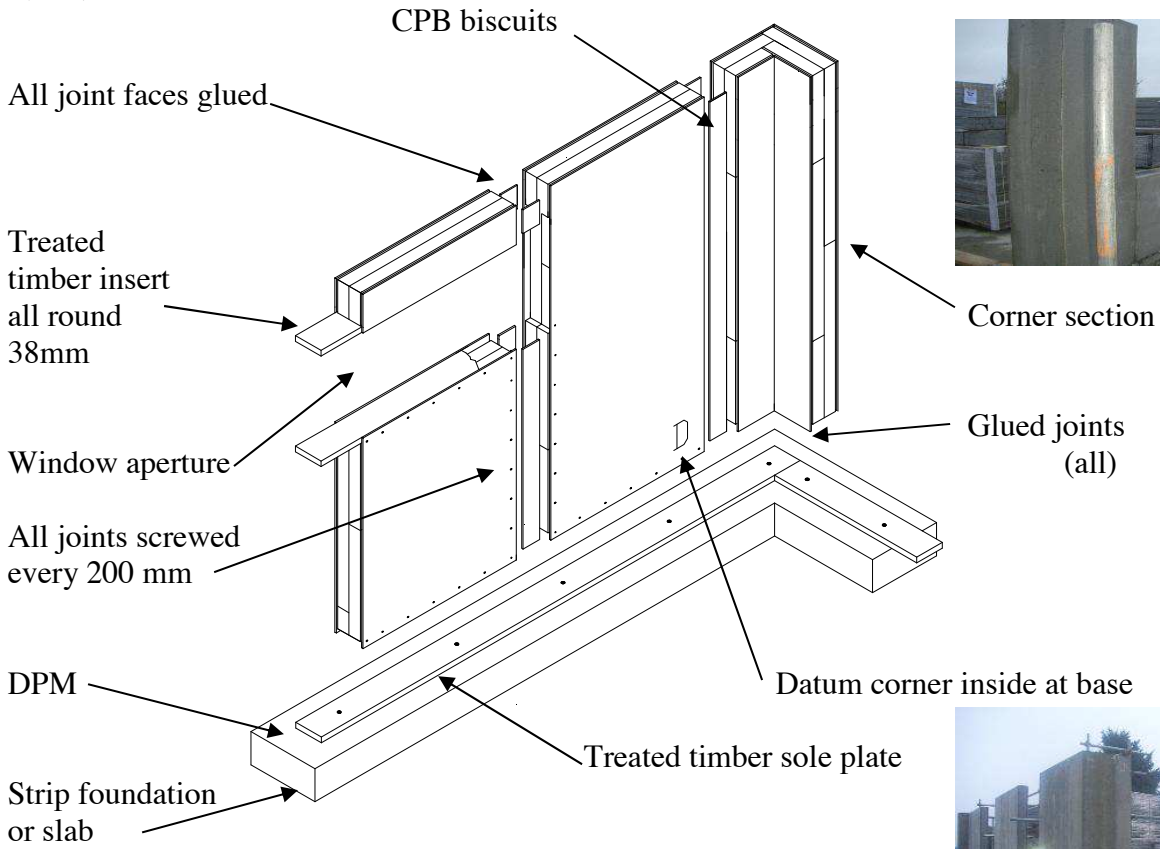
House Shell Assembly

in 8 easy steps



Panel-to-panel plan drawing

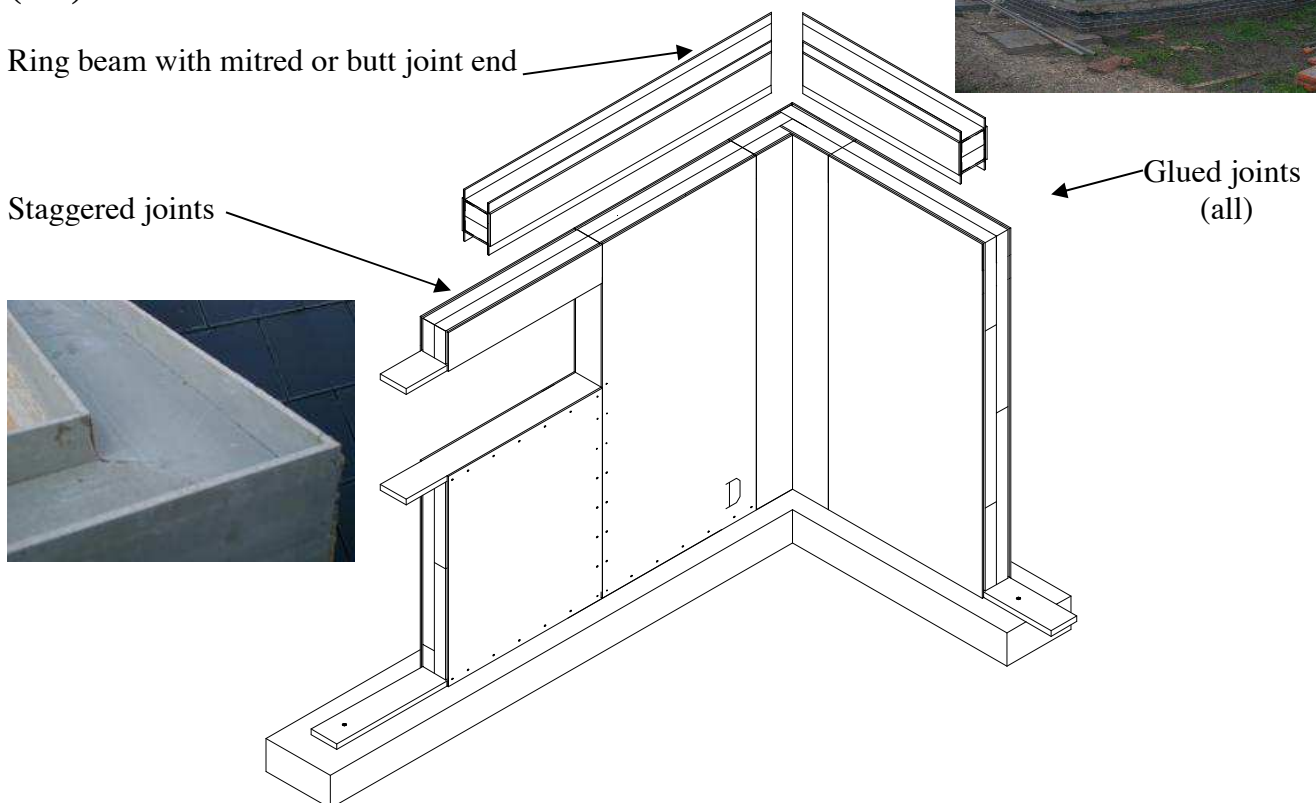
(A)



Corner section

Glued joints (all)

(B)

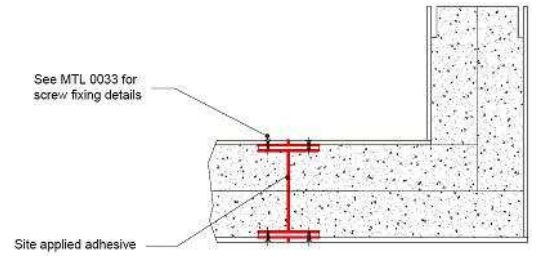


Glued joints (all)

Mantle

Building System

(C)

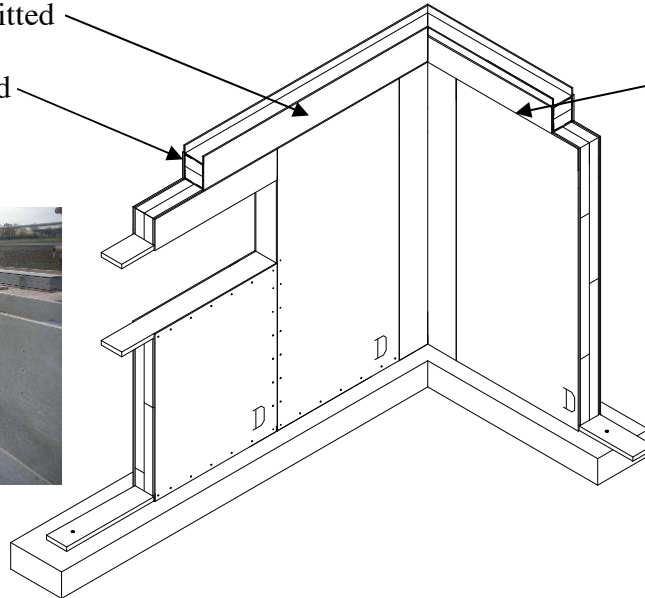


Corner-to-panel plan drawing

Inner flange plate not fitted

Outer flange plate fitted

Screws at 200 centres



(D)

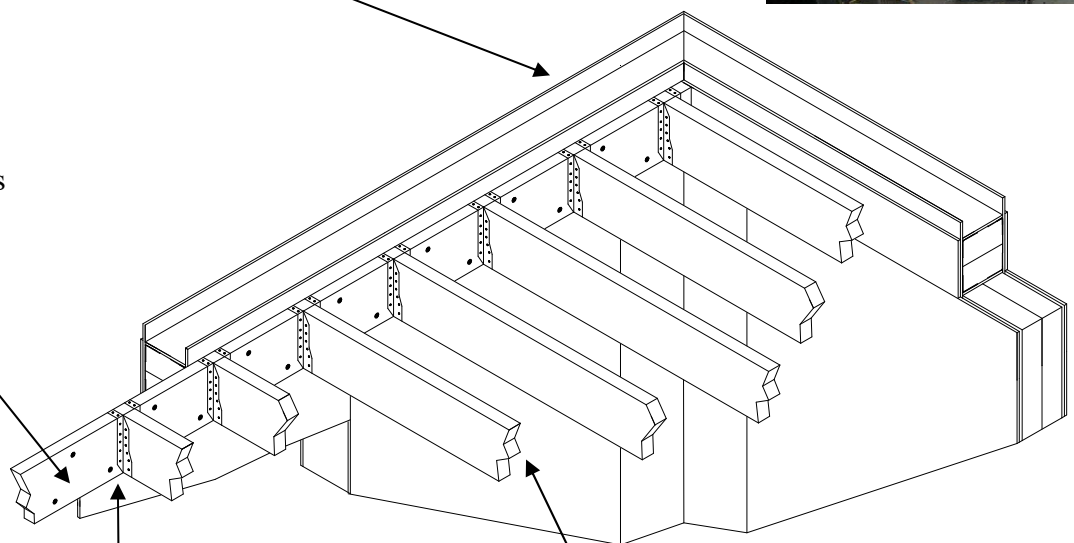
Joist layout as per manufacturers spec

2 rows of screw
at 265 mm centres
(tba by design)

Wall plate glued
to wall

Standard steel joist hangers

Timber or composite floor joists

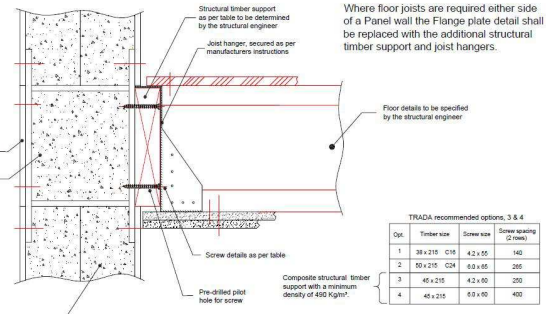
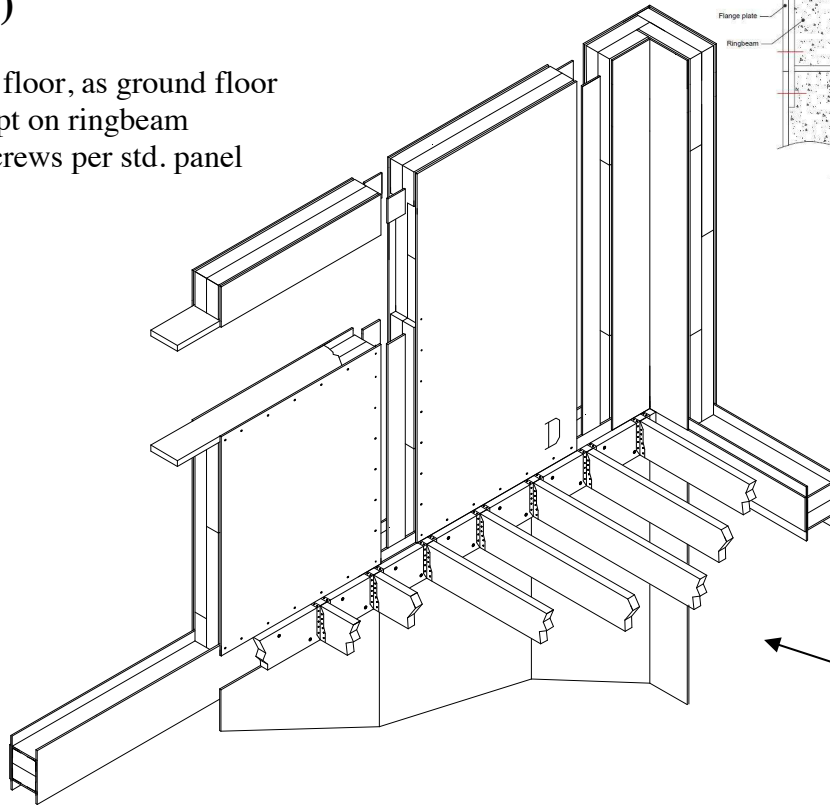


Mantle

Building System

(E)

First floor, as ground floor
except on ringbeam
66 screws per std. panel



A ringbeam/floor connection



Install flooring
(not shown)

(F)

Gable wall

Treated timber infill

CPB cover

Treated timber infill

Eaves as
required

Roof angle chamfer

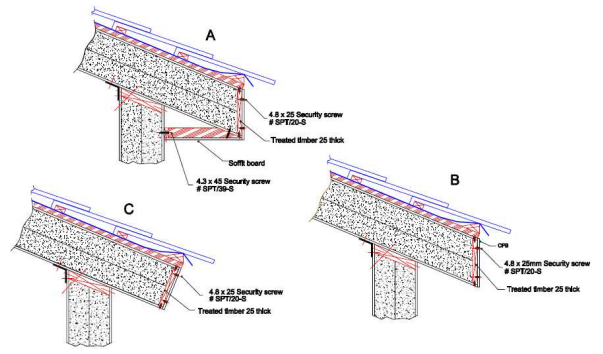
Screw through panel and
timber-plate at 200 mm
centres. (from inside)



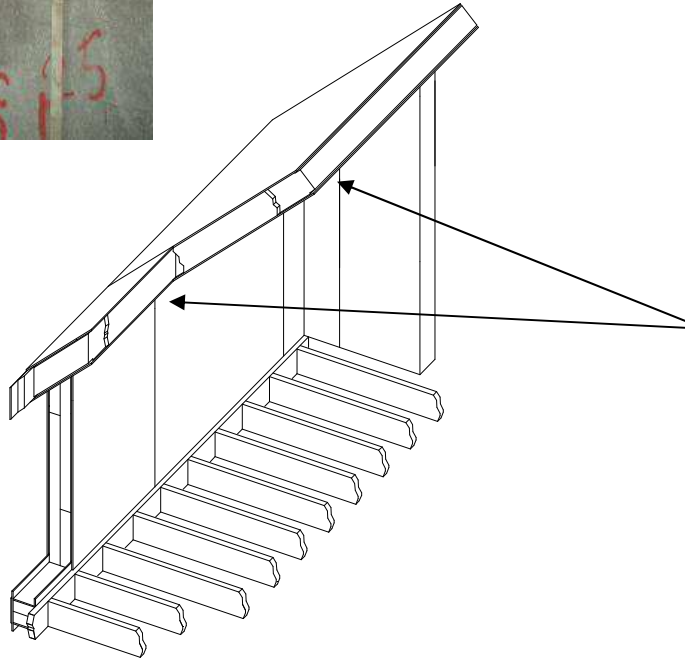
Mantle

Building System

(G)



Some potential eave designs

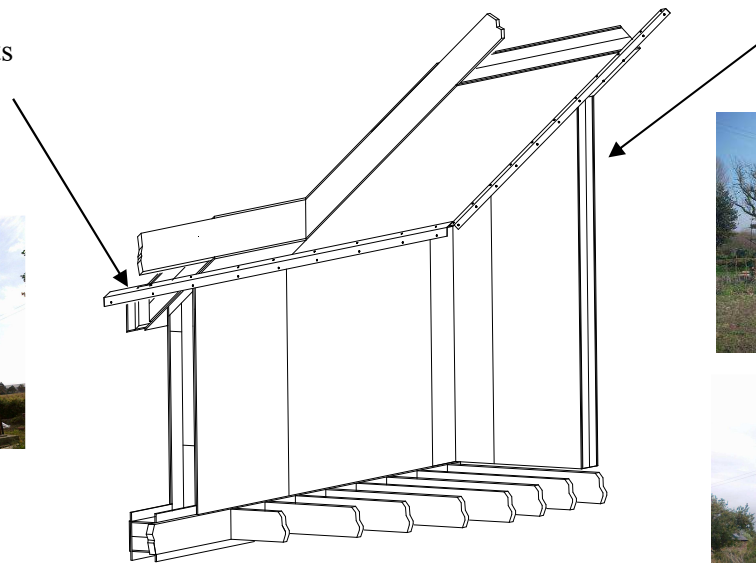
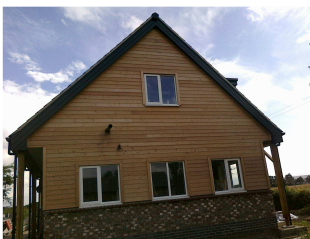


38mm treated timber infill at Dormer windows



(H)

Mild steel heel brackets
65mm leg, screw at
200 centres



Gable wall



Technical Drawings are available upon written request.